

BorgWarner liefert 800-V-Bordladegerät an großen nordamerikanischen OEM

- *800-V-Bordladegerät (OBC) für den Einsatz in Premium-Elektrofahrzeugen*
- *Siliziumkarbid (SiC)-Technologie von BorgWarner und bidirektionale Vehicle-to-Load (V2L)-Funktion*
- *Erster Onboard-Charger von BorgWarner für Nordamerika bietet mit einphasigem und dreiphasigem Betrieb verschiedene Leistungsstufen*

Auburn Hills, Michigan, 7. November 2023 – BorgWarner wird einen großen nordamerikanischen OEM mit seinem bidirektionalen 800-V-Onboard-Ladegerät (OBC) für dessen batterieelektrische Premium-Fahrzeugplattformen beliefern. Die Technologie nutzt Leistungsschalter aus Siliziumkarbid (SiC) für einen verbesserten Wirkungsgrad und bietet erhöhte Leistungsdichte, Energieumwandlung und Sicherheitskonformität. Der Produktionsstart ist für Januar 2027 geplant.

„Dies ist ein großer Erfolg für unser Team. Es ist unser erster OBC-Vertragsabschluss mit diesem OEM und der erste überhaupt in Nordamerika“, sagte Dr. Stefan Demmerle, President und General Manager, BorgWarner PowerDrive Systems. „Durch unsere Leistungselektronik-Expertise und den marktführenden Status unserer 800-Volt- und SiC-Technologie bieten wir eine Lösung, um die Ladeleistung zu maximieren, die Leistungsdichte zu erhöhen und die Effizienz zu verbessern. Gleichzeitig werden wir mit unserem OBC unterschiedlichen Netzkonfigurationen in den verschiedenen Regionen gerecht.“

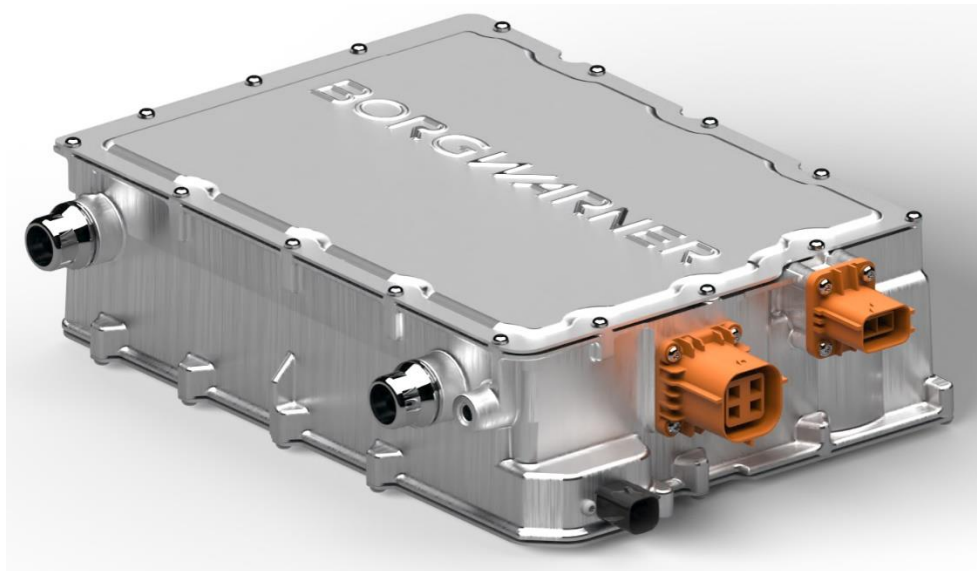
Die OBC-Technologie von BorgWarner wird in Elektrofahrzeugen eingesetzt, um Wechselstrom in Gleichstrom umzuwandeln und so die Batterien zu laden. Der OBC ist für Leistungswerte von 19,2 kW im Einphasenbetrieb bis 22 kW im Dreiphasenbetrieb geeignet. Die 19,2-kW-Leistungsstufe verwendet zwei Stromleitungen für den im US-Markt üblichen einphasigen Netzanschluss. Die 22-kW-Leistungsstufe nutzt einen dreiphasigen Netzanschluss

und ist für den Einsatz auf dem europäischen Markt vorgesehen. Das einphasige 19,2-kW-Ladegerät ist derzeit das einzige seiner Art, das in Nordamerika eingeführt wird.

Das OBC verfügt über einen bidirektionalen Vehicle-to-Load (V2L)-Betriebsmodus, der es Nutzern ermöglicht, die Fahrzeugbatterie zum Betrieb verschiedener elektrischer Geräte direkt über den Ladeanschluss des Fahrzeugs zu verwenden. Dies wird in der Branche zunehmend gewünscht. Sowohl die Hardware als auch die Software des Ladegeräts werden von BorgWarner entwickelt und hergestellt.

Über BorgWarner

BorgWarner bringt als globaler Produktführer seit mehr als 130 Jahren erfolgreich Mobilitätsinnovationen auf den Markt. Mit einem sich permanent weiterentwickelnden Produktportfolio unterstützen wir den weltweiten Übergang zur e-Mobilität – und tragen so zur Schaffung einer sauberen, gesunden und sicheren Zukunft bei.



Für die batterieelektrischen Premium-Fahrzeuge eines großen nordamerikanischen OEM liefert BorgWarner sein bidirektionales 800-V-Onboard-Ladegerät (OBC).

Forward Looking Statements: This release may contain forward-looking statements as contemplated by the 1995 Private Securities Litigation Reform Act that are based on management's current outlook, expectations, estimates and projections. Words such as "anticipates," "believes," "continues," "could," "designed," "effect," "estimates," "evaluates," "expects," "forecasts," "goal," "guidance," "initiative," "intends," "may," "outlook," "plans," "potential," "predicts," "project," "pursue," "seek," "should," "target," "when," "will," "would," and variations of such words and similar are intended to identify such forward-looking statements. Further, all statements, other than statements of historical fact, contained or incorporated by reference in this release that we expect or anticipate will or may occur in the future regarding our financial position, business strategy and measures to implement that strategy, including changes to operations, competitive strengths, goals, expansion and growth of our business and operations, plans, references to future success and other such matters, are forward-looking statements. Accounting estimates, such as those described under the

heading “Critical Accounting Policies and Estimates” in Item 7 of our most recently filed Annual Report on Form 10-K (“Form 10-K”), are inherently forward-looking. All forward-looking statements are based on assumptions and analyses made by us in light of our experience and our perception of historical trends, current conditions and expected future developments, as well as other factors we believe are appropriate under the circumstances. Forward-looking statements are not guarantees of performance, and the Company’s actual results may differ materially from those expressed, projected or implied in or by the forward-looking statements.

You should not place undue reliance on these forward-looking statements, which speak only as of the date of this release. Forward-looking statements are subject to risks and uncertainties, many of which are difficult to predict and generally beyond our control, that could cause actual results to differ materially from those expressed, projected or implied in or by the forward-looking statements. These risks and uncertainties, among others, include: supply disruptions impacting us or our customers, such as the current shortage of semiconductor chips that has impacted original equipment manufacturer (“OEM”) customers and their suppliers, including us; commodity availability and pricing, and an inability to achieve expected levels of recoverability in commercial negotiations with customers concerning these costs; competitive challenges from existing and new competitors including OEM customers; the challenges associated with rapidly changing technologies, particularly as relates to electric vehicles, and our ability to innovate in response; uncertainties regarding the extent and duration of impacts of matters associated with the COVID 19/coronavirus pandemic, including additional production disruptions; the difficulty in forecasting demand for electric vehicles and our electric vehicles revenue growth; potential disruptions in the global economy caused by Russia’s invasion of Ukraine; the ability to identify targets and consummate acquisitions on acceptable terms; failure to realize the expected benefits of acquisitions on a timely basis; the possibility that the spin-off transaction will not achieve its intended benefits; the failure to promptly and effectively integrate acquired businesses; the potential for unknown or inestimable liabilities relating to the acquired businesses; our dependence on automotive and truck production, both of which are highly cyclical and subject to disruptions; our reliance on major OEM customers; fluctuations in interest rates and foreign currency exchange rates; our dependence on information systems; the uncertainty of the global economic environment; the outcome of existing or any future legal proceedings, including litigation with respect to various claims, or governmental investigations, including related litigation; future changes in laws and regulations, including, by way of example, taxes and tariffs, in the countries in which we operate; impacts from any potential future acquisition or disposition transactions; and the other risks noted in reports that we file with the Securities and Exchange Commission, including Item 1A, “Risk Factors” in our most recently filed Form 10-K and/or Quarterly Report on Form 10-Q. We do not undertake any obligation to update or announce publicly any updates to or revisions to any of the forward-looking statements in this release to reflect any change in our expectations or any change in events, conditions, circumstances, or assumptions underlying the statements.

PR-Kontakt:

Anna Penava

Telefon: +49 7141-132-753

E-Mail: mediacontact.eu@borgwarner.com